



Spencer.

1 Redlands House Mews, Dore Road, Dore, S17 3AN

Buy —

An exceptional high specification new build home on Dore Road with south facing garden

— from *Spencer.*

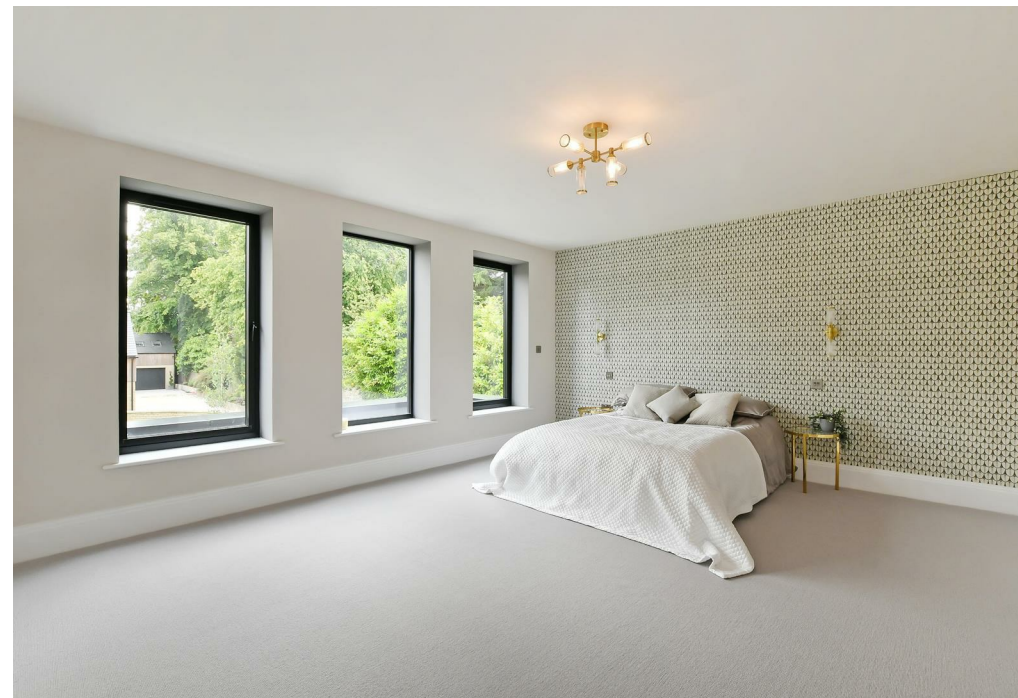
- Superb six bedroom / four bathroom detached family NEW BUILD home of almost 5500 feet
- Large living room with log burning stove
- Driveway parking for several vehicles behind electric gate and large garage
- Huge living room / kitchen / separate dining room with separate utility room and prep kitchen
- Siematic kitchen with integrated Siemens appliances from My Fathers Heart
- Underfloor heating to ground and first floors
- Solar panels and air source heat pump
- Impressive principal suite with dressing room and en-suite bathroom
- Enclosed level south facing garden
- 10 year new build warranty with ICW

Offers Around

£2,100,000









Floorplan

1 REDLANDS HOUSE MEWS

APPROXIMATE GROSS INTERNAL AREA = 508.3 SQ M / 5471 SQ FT
(INCLUDING GARAGE / EXCLUDING VOID)



Illustration for identification purposes only, measurements are approximate, not to scale.

Spencer.

+44 (0)114 268 3682
info@spencersestateagents.co.uk

469 Ecclesall Road, Sheffield, S11 8PP
SpencersEstateAgents.co.uk

SpencersAgents
SpencersAgents
SpencersEstateAgents

All enquiries and negotiations conducted via the Spencers office. We are obliged under the Estate Agent Act 1991 to qualify all offers and an independent mortgage consultant will speak to you to substantiate your details. The particulars are set out as a general outline only for guidance and do not constitute part of an offer or contract. Measurements are given in good faith and believed to be correct. Any prospective buyer should satisfy themselves as to the correctness of all statements and should not rely on them as representation of fact. no person in the employment of Spencers has any authority to make or give representation or warranty whatever in relation to this property.

Viewing: Via the Agents
Spencers Agents Ltd, 469 Ecclesall Road, Sheffield S11 8pp | Registered in England No. 7565948