



Spencer.

21, Queenswood Road, Middlewood, S6 1RR

Buy —

This well proportioned four double bedroom link detached family home with westerly facing enclosed rear garden, garage and off street parking.

— from *Spencer.*

- Superb four bedroom family home
- Beautifully presented throughout
- Separate kitchen and utility room
- Double aspect lounge with deck to garden
- Family bathroom, master ensuite and downstairs WC
- Garage and off street parking
- Private enclosed rear garden
- Council Tax Band - D
- EPC Rating - C
- [What3words:///luck.translated.score](#)

Offers Around

£425,000

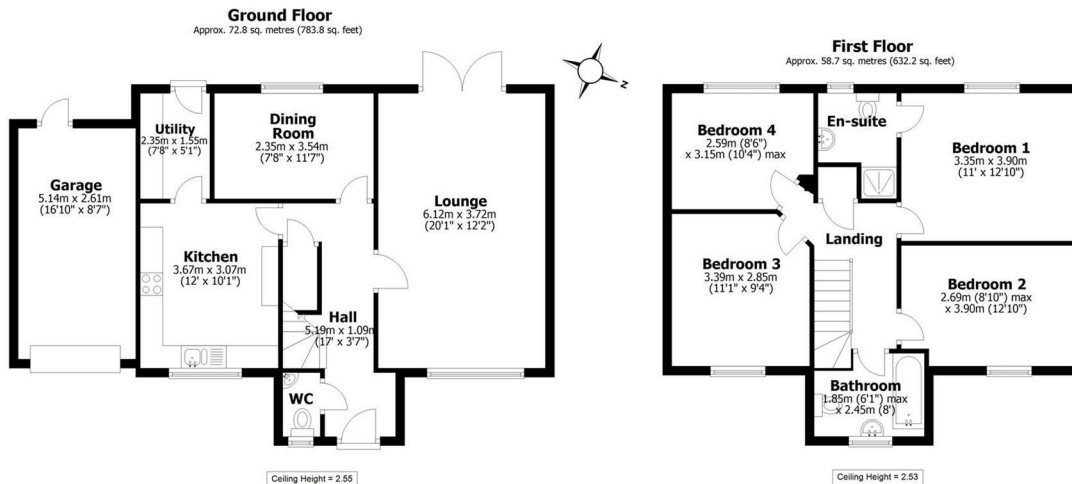








Floorplan



Total area: approx. 131.6 sq. metres (1416.0 sq. feet)

All measurements are approximate
Yorkshire EPC & Floor Plans Ltd
Plan produced using PlanUp.

21 Queenswood Road

Spencer.

+44 (0)114 268 3682
info@spencersestateagents.co.uk

469 Ecclesall Road, Sheffield, S118PP
SpencersEstateAgents.co.uk

SpencersAgents
SpencersAgents
SpencersEstateAgents

All enquiries and negotiations conducted via the Spencers office. We are obliged under the Estate Agent Act 1991 to qualify all offers and an independent mortgage consultant will speak to you to substantiate your details. The particulars are set out as a general outline only for guidance and do not constitute part of an offer or contract. Measurements are given in good faith and believed to be correct. Any prospective buyer should satisfy themselves as to the correctness of all statements and should not rely on them as representation of fact. No person in the employment of Spencers has any authority to make or give representation or warranty whatever in relation to this property.

Viewing: Via the Agents
Spencers Agents Ltd, 469 Ecclesall Road, Sheffield S11 8PP | Registered in England No. 7565948