



Spencer.

27, Sharrow View, Nether Edge, S7 1ND

Buy —

A one double bedroom, top floor apartment with allocated parking located in a popular and convenient position within Sheffield, S7.

— from *Spencer.*

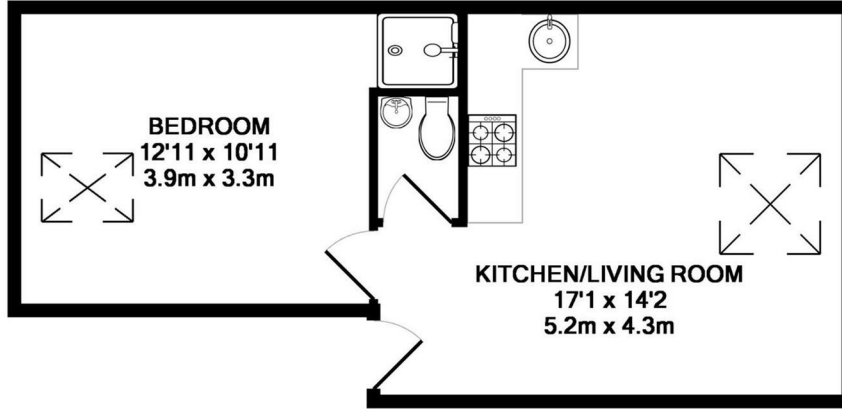
-
- Available with no chain
 - One double bedroom
 - Top floor
 - One allocated parking space
 - Neutral decor
 - Ideal first time buyer or investment opportunity
 - Excellent location
 - Council Tax Band- A
 - EPC Rating- D
 - [What3words/// trim.move.mimic](https://www.what3words.com/trim.move.mimic)



£85,000



Floorplan



TOTAL APPROX. FLOOR AREA 384 SQ.FT. (35.7 SQ.M.)

Whilst every attempt has been made to ensure the accuracy of the floor plan contained here, measurements of doors, windows, rooms and any other items are approximate and no responsibility is taken for any error, omission, or mis-statement. This plan is for illustrative purposes only and should be used as such by any prospective purchaser. The services, systems and appliances shown have not been tested and no guarantee as to their operability or efficiency can be given

Made with Metropix ©2015



Spencer.

+44 (0)114 268 3682
info@spencersestateagents.co.uk

469 Ecclesall Road, Sheffield, S11 8PP
SpencersEstateAgents.co.uk

SpencersAgents
 SpencersAgents
 SpencersEstateAgents

All enquiries and negotiations conducted via the Spencers office. We are obliged under the Estate Agent Act 1991 to qualify all offers and an independent mortgage consultant will speak to you to substantiate your details. The particulars are set out as a general outline only for guidance and do not constitute part of an offer or contract. Measurements are given in good faith and believed to be correct. Any prospective buyer should satisfy themselves as to the correctness of all statements and should not rely on them as representation of fact. No person in the employment of Spencers has any authority to make or give representation or warranty whatever in relation to this property.

Viewing: Via the Agents
Spencers Agents Ltd, 469 Ecclesall Road, Sheffield S11 8pp | Registered in England No. 7565948