



*Spencer.*

16, Muskoka Drive, Bents Green, S11 7RJ

**Buy** ———  
this absolutely beautiful detached four bedroom family home set in one of Sheffield's most sought after locations with excellent school catchment.

——— from *Spencer.*

- Stunning four bedroom detached family home
- Private and secluded wrap around garden
- Four double bedrooms
- Beautifully presented and maintained throughout
- Flexible family accommodation with four reception rooms
- Superb location with great school catchments
- Gated access, ample driveway parking and garage
- Council Tax Band-E
- EPC-D
- What Three Words///aware.flap.hats



Offers Around  
**£785,000**







# Floorplan

## 16 MUSKOKA DRIVE

APPROXIMATE GROSS INTERNAL AREA = 227.9 SQ M / 2453 SQ FT  
OUTBUILDING = 9.8 SQ M / 105 SQ FT  
TOTAL = 237.7 SQ M / 2558 SQ FT  
(INCLUDING GARAGE)

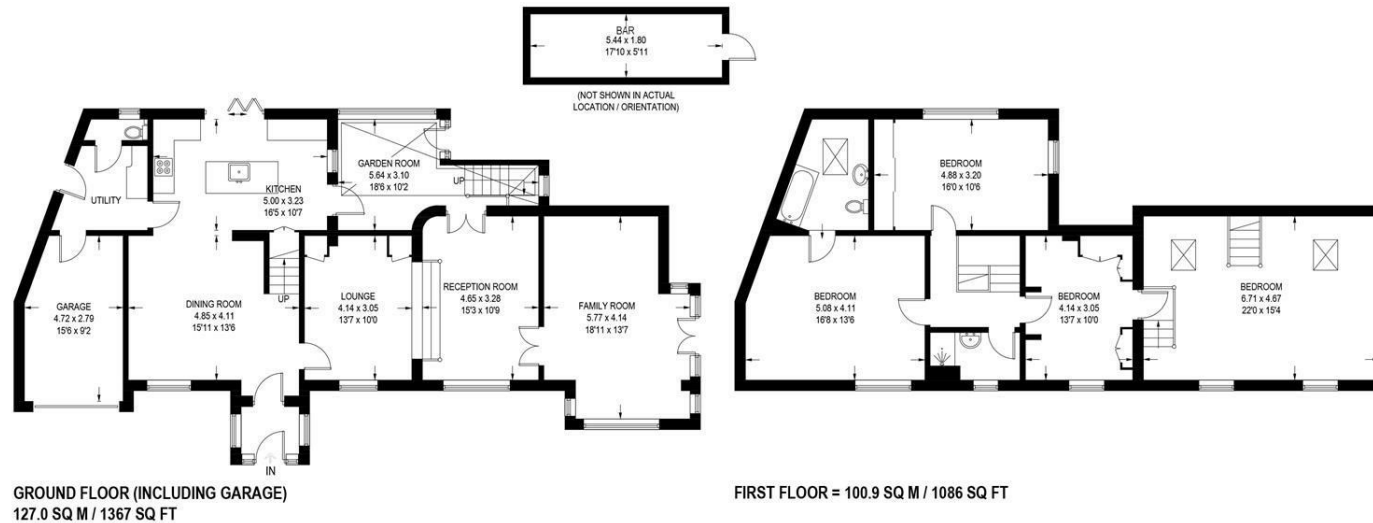


Illustration for identification purposes only, measurements are approximate, not to scale.

**Spencer.**

+44 (0)114 268 3682  
info@spencersestateagents.co.uk

469 Ecclesall Road, Sheffield, S11 8PP  
SpencersEstateAgents.co.uk

SpencersAgents  
SpencersAgents  
SpencersEstateAgents

All enquiries and negotiations conducted via the Spencers office. We are obliged under the Estate Agent Act 1991 to qualify all offers and an independent mortgage consultant will speak to you to substantiate your details. The particulars are set out as a general outline only for guidance and do not constitute part of an offer or contract. Measurements are given in good faith and believed to be correct. Any prospective buyer should satisfy themselves as to the correctness of all statements and should not rely on them as representation of fact. no person in the employment of Spencers has any authority to make or give representation or warranty whatever in relation to this property.

Viewing: Via the Agents  
Spencers Agents Ltd, 469 Ecclesall Road, Sheffield S11 8pp | Registered in England No. 7565948