



Spencer.

Apt 3 Lyon, Kenwood Court, Nether Edge, S7 1NT

Buy —

this well presented, first floor two double bedroom apartment having an open plan living space with Juliette balcony and allocated parking space in an exclusive gated development.

— from *Spencer.*

- First floor apartment
- Two double bedrooms
- One ensuite shower room and family bathroom
- Open plan living dining kitchen
- Exclusive gated development
- Allocated car parking
- Excellent location
- Council Tax Banding-C
- EPC Rating-B
- [What3Words///faster.exact.comm](#)



Offers Around

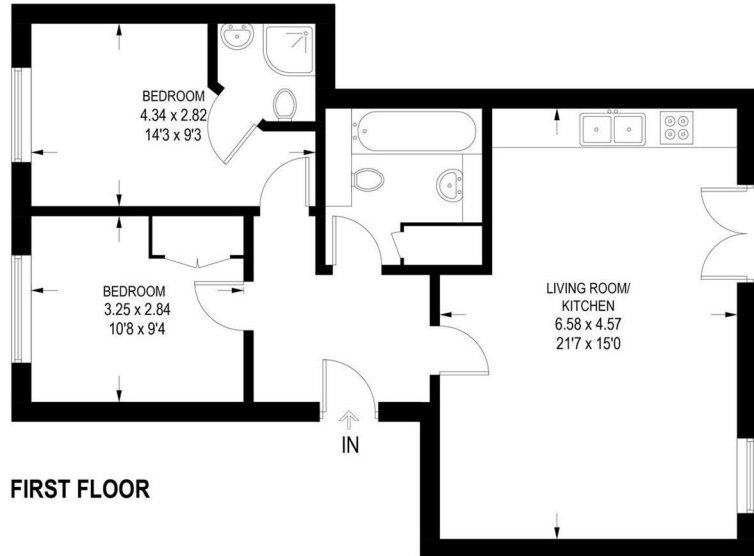
£200,000





APARTMENT 3, KENWOOD COURT

APPROXIMATE GROSS INTERNAL AREA = 64.2 SQ M / 691 SQ FT



FIRST FLOOR

Illustration for identification purposes only, measurements are approximate, not to scale

Spencer.

+44 (0)114 268 3682
info@spencersestateagents.co.uk

469 Ecclesall Road, Sheffield, S11 8PP
SpencersEstateAgents.co.uk

SpencersAgents
SpencersAgents
SpencersEstateAgents

All enquiries and negotiations conducted via the Spencers office. We are obliged under the Estate Agent Act 1991 to qualify all offers and an independent mortgage consultant will speak to you to substantiate your details. The particulars are set out as a general outline only for guidance and do not constitute part of an offer or contract. Measurements are given in good faith and believed to be correct. Any prospective buyer should satisfy themselves as to the correctness of all statements and should not rely on them as representation of fact. No person in the employment of Spencers has any authority to make or give representation or warranty whatever in relation to this property.

Viewing: Via the Agents
Spencers Agents Ltd, 469 Ecclesall Road, Sheffield S11 8pp | Registered in England No. 7565948