



Spencer.

261, Ringinglow Road, Bents Green, S11 7PZ

Buy —

a fabulous detached house with the most wonderful large south facing gardens, excellent proportions and backing on to Silverdale School

— from *Spencer.*

- A perfect four bedroomed family house
- South facing huge gardens with views up towards Whirlow Farm
- Superb accommodation with breakfasting kitchen and lounge with formal dining space
- Large basement with garden room leading out to private patio
- Large veranda off the main living room overlooking the gardens
- Driveway parking for several cars
- Potential for further development and conversion of the roof space
- Sheffield Council Tax Band - F
- EPC Rating - C
- What3words ///marked.august.early



Offers Around

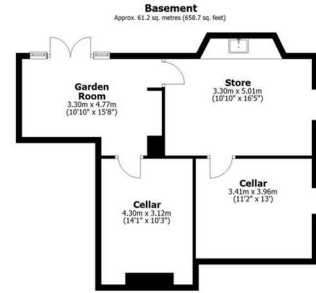
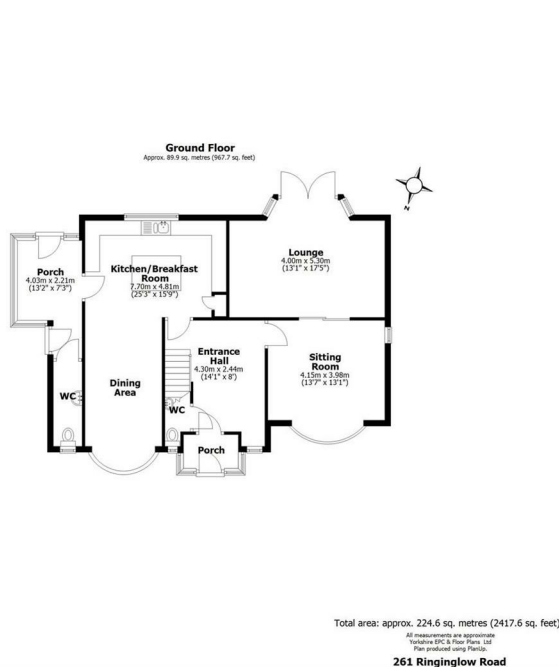
£875,000







Floorplan



Spencers.

+44 (0)114 268 3682
info@spencersestateagents.co.uk
 469 Ecclesall Road, Sheffield, S118PP
SpencersEstateAgents.co.uk

SpencersAgents
SpencersAgents
SpencersEstateAgents

All enquiries and negotiations conducted via the Spencers office. We are obliged under the Estate Agent Act 1991 to qualify all offers and an independent mortgage consultant will speak to you to substantiate your details. The particulars are set out as a general outline only for guidance and do not constitute part of an offer or contract. Measurements are given in good faith and believed to be correct. Any prospective buyer should satisfy themselves as to the correctness of all statements and should not rely on them as representation of fact. No person in the employment of Spencers has any authority to make or give representation or warranty whatever in relation to this property.

Viewing: Via the Agents
 Spencers Agents Ltd, 469 Ecclesall Road, Sheffield S11 8PP | Registered in England No. 7565948