



Spencer.

64, Winchester Road, Fulwood, S10 4EE

Buy —

this stunning two bedroom apartment which has breathtaking views and is located in the popular suburb of Fulwood

— from *Spencer.*

- Top floor apartment
- Two bedrooms
- Large private roof terrace
- Fabulous kitchen diner
- No onward chain
- Villeroy and Boch suite
- Teak parquet flooring
- Bi-fold doors to terrace
- Off road private parking
- Close to amenities

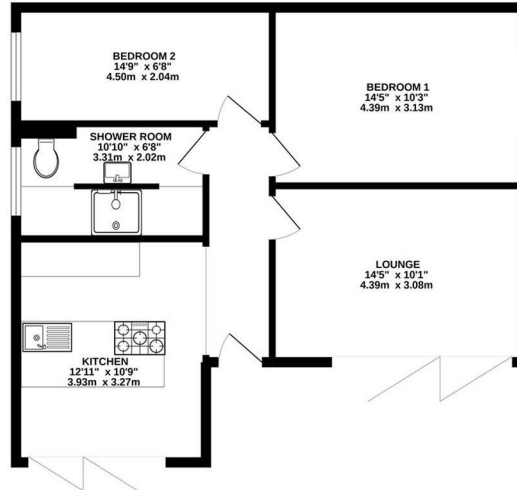


£165,000



Floorplan

TOP FLOOR FLAT - MAX
ROOM HEIGHT = 2.34M



TOTAL FLOOR AREA: 689 sq.ft. (64.0 sq.m.) approx.

Whilst every effort has been made to ensure the accuracy of the floorplan, Spencers Agents does not warrant the measurements of this floorplan. Spencers Agents is not responsible for any errors, omissions or misstatements. This plan is for guidance purposes only and should not be used as the only basis for any prospective purchase. This floorplan, kitchen and appliances shown here are not intended to be a guarantee. All dimensions are given in feet and inches. Made with Realplan 10/10



Spencer.

+44 (0)114 268 3682
info@spencersestateagents.co.uk
469 Ecclesall Road, Sheffield, S11 8PP
SpencersEstateAgents.co.uk

SpencersAgents
 SpencersAgents
 SpencersEstateAgents

All enquiries and negotiations conducted via the Spencers office. We are obliged under the Estate Agent Act 1991 to qualify all offers and an independent mortgage consultant will speak to you to substantiate your details. The particulars are set out as a general outline only for guidance and do not constitute part of an offer or contract. Measurements are given in good faith and believed to be correct. Any prospective buyer should satisfy themselves as to the correctness of all statements and should not rely on them as representation of fact. No person in the employment of Spencers has any authority to make or give representation or warranty whatever in relation to this property.

Viewing: Via the Agents
Spencers Agents Ltd, 469 Ecclesall Road, Sheffield S11 8pp | Registered in England No. 7565948