



*Spencer.*

**7, Thompson Road, Botanical Gardens, S11 8RA**

Buy —

A super, well proportioned three double bedroom traditional mid terrace property in an excellent location.

— from *Spencers.*

- 
- Available with no chain
  - Three double bedrooms
  - Traditional mid terrace property
  - Beautifully presented throughout
  - Modern fitted kitchen
  - Superb proportions
  - Excellent location
  - Council Tax Band- B
  - EPC-D
  - What3Words: leave.drip.spill



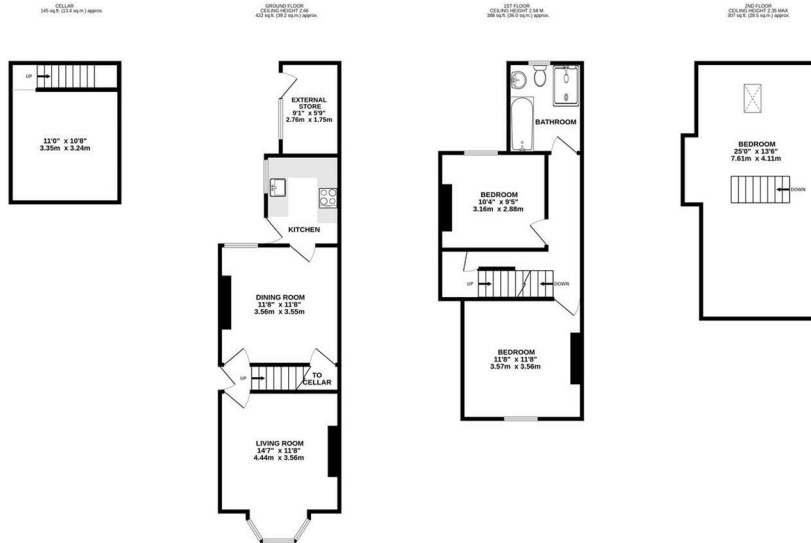
---

Offers Around

**£370,000**



# Floorplan



TOTAL FLOOR AREA: 1065sq. ft. (98.9 sq.m.) approx.

Whilst every attempt has been made to ensure the accuracy of the Floorplan contained here, measurements of floors, windows, rooms and any other items are approximate and no responsibility is taken for any error, omission or mis-statement. This plan is for illustrative purposes only and should be read in conjunction with the prospectus. The services, systems and appliances shown have not been tested and no guarantee as to their operability or efficiency can be given.  
Made with Metropix C5024



**Spencer.**

+44 (0)114 268 3682  
 info@spencersestateagents.co.uk  
 469 Ecclesall Road, Sheffield, S11 8PP  
 SpencersEstateAgents.co.uk

**SpencersAgents**  
**SpencersAgents**  
**SpencersEstateAgents**

All enquiries and negotiations conducted via the Spencers office. We are obliged under the Estate Agent Act 1991 to qualify all offers and an independent mortgage consultant will speak to you to substantiate your details. The particulars are set out as a general outline only for guidance and do not constitute part of an offer or contract. Measurements are given in good faith and believed to be correct. Any prospective buyer should satisfy themselves as to the correctness of all statements and should not rely on them as representation of fact. No person in the employment of Spencers has any authority to make or give representation or warranty whatever in relation to this property.

Viewing: Via the Agents  
 Spencers Agents Ltd, 469 Ecclesall Road, Sheffield S11 8pp | Registered in England No. 7565948