



Spencer.

67, Stumperlowe Crescent Road, Fulwood, S10 3PR

Buy —

A beautifully presented and maintained five double bedroom detached family home with garage, gated off street multi vehicle parking and having further potential (subject to consents) if required making this a hugely desirable property.

— from *Spencer.*

- Stunning detached family home
- Five double bedrooms
- Beautifully presented throughout
- Enclosed and private rear garden with Southerly facing aspect
- Garage, Electric gates, CCTV and ample off street parking
- Potential to further extend subject to necessary consents
- Highly sought after location with excellent school catchment.
- Council Tax Band-G
- EPC Rating-D
- [What3words///fear.luxury.answer](https://www.what3words.com/fear.luxury.answer)



Offers Around

£1,450,000







Floorplan

67 STUMPERLOWE CRESCENT ROAD

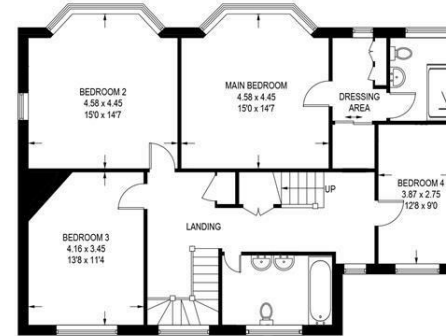
APPROXIMATE GROSS INTERNAL AREA = 237.4 SQ M / 2555.3 SQ FT

BASEMENT = 111.3 SQ M / 1198.2 SQ FT

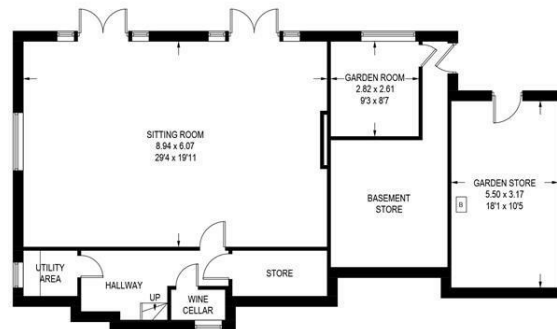
TOTAL = 348.7 SQ M / 3753.5 SQ FT



SECOND FLOOR
19.9 SQ M / 214.2 SQ FT



FIRST FLOOR
107.5 SQ M / 1157.2 SQ FT



BASEMENT
111.3 SQ M / 1198.2 SQ FT



GROUND FLOOR
110.0 SQ M / 1183.9 SQ FT

Illustration for identification purposes only, measurements are approximate, not to scale.

Spencer.

+44 (0)114 268 3682
info@spencersestateagents.co.uk

469 Ecclesall Road, Sheffield, S11 8PP
SpencersEstateAgents.co.uk

SpencersAgents
SpencersAgents
SpencersEstateAgents

All enquiries and negotiations conducted via the Spencers office. We are obliged under the Estate Agent Act 1991 to qualify all offers and an independent mortgage consultant will speak to you to substantiate your details. The particulars are set out as a general outline only for guidance and do not constitute part of an offer or contract. Measurements are given in good faith and believed to be correct. Any prospective buyer should satisfy themselves as to the correctness of all statements and should not rely on them as representation of fact. No person in the employment of Spencers has any authority to make or give representation or warranty whatever in relation to this property.

Viewing: Via the Agents
Spencers Agents Ltd, 469 Ecclesall Road, Sheffield S11 8pp | Registered in England No. 7565948