



Spencer.

23, Ledstone Road, Woodseats, S8 0NS

Buy —

a super three bedroomed end terraced house  
with excellent city views to the front

— from *Spencer.*

- End terraced house with front entrance porch
- Living room with city views to the front
- Breakfast kitchen with access on to the rear courtyard tiered garden
- Two bedrooms and bathroom on the first floor
- Attic bedroom with Velux windows
- Position at the head of the cul-de-sac
- No chain
- [What3Words://straw.book.horns](#)
- Council Tax Band A
- EPC Rating - D



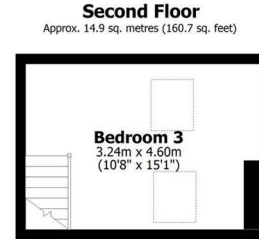
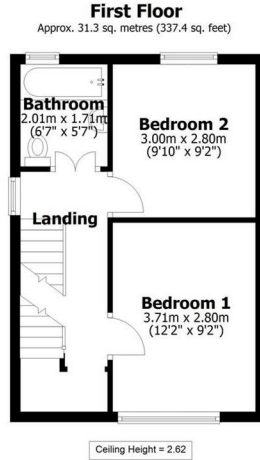
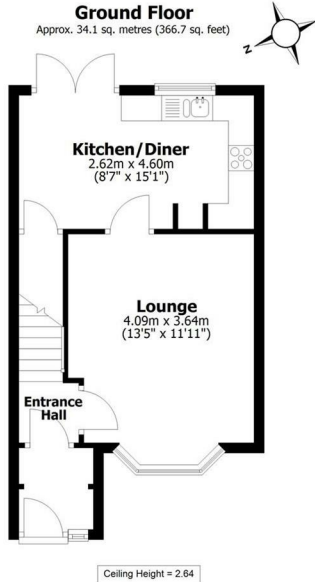
Offers Around

**£250,000**





# Floorplan



Total area: approx. 80.3 sq. metres (864.8 sq. feet)

All measurements are approximate  
Yorkshire EPC & Floor Plans Ltd  
Plan produced using PlanUp.

**23 Ledstone Road**

**Spencer.**

+44 (0)114 268 3682

info@spencersestateagents.co.uk

469 Ecclesall Road, Sheffield, S11 8PP

SpencersEstateAgents.co.uk

**SpencersAgents**

**SpencersAgents**

**SpencersEstateAgents**

All enquiries and negotiations conducted via the Spencers office. We are obliged under the Estate Agent Act 1991 to qualify all offers and an independent mortgage consultant will speak to you to substantiate your details. The particulars are set out as a general outline only for guidance and do not constitute part of an offer or contract. Measurements are given in good faith and believed to be correct. Any prospective buyer should satisfy themselves as to the correctness of all statements and should not rely on them as representation of fact. No person in the employment of Spencers has any authority to make or give representation or warranty whatever in relation to this property.

Viewing: Via the Agents

Spencers Agents Ltd, 469 Ecclesall Road, Sheffield S11 8pp | Registered in England No. 7565948