



Spencer.

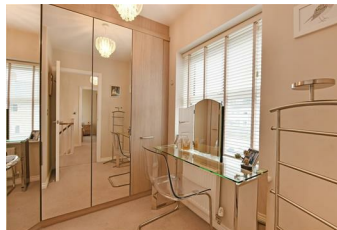
8, Hawthorne Mews, Crookes, S10 5AD

Buy —

this beautiful five bedroom end town house which is superbly presented with detached garage and off street parking.

— from *Spencers*.

- Superior quality five bedroom town house.
- Wealth of flexible accommodation
- Beautifully maintained and presented
- Family bathroom, ensuite and downstairs WC
- Excellent location for amenities with great school catchment
- Enclosed low maintenance garden
- Ample off street Parking and detached garage
- Council Tax Band-E
- EPC Rating-B
- [What3words///curvy.bikes.cubs](https://www.what3words.com/curvy.bikes.cubs)



Offers Around

**£500,000**







# Floorplan

## 8 HAWTHORNE MEWS

APPROXIMATE GROSS INTERNAL AREA = 125.3 SQ M / 1348 SQ FT  
GARAGE = 13.4 SQ M / 144 SQ FT  
TOTAL = 138.7 SQ M / 1492 SQ FT

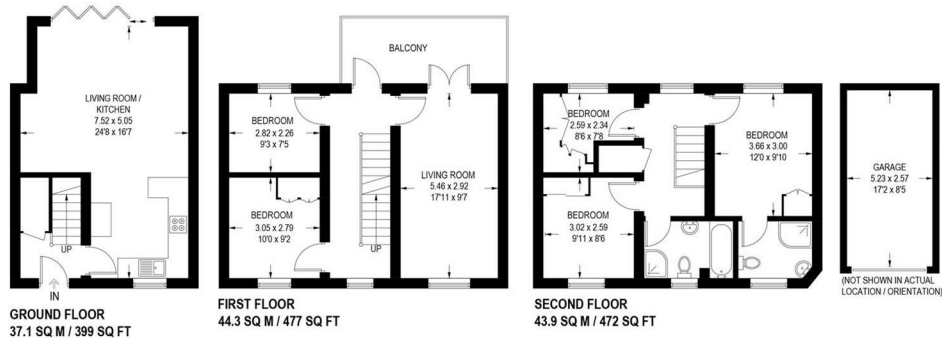


Illustration for identification purposes only, measurements are approximate, not to scale.

**Spencer.**

+44 (0)114 268 3682  
info@spencersestateagents.co.uk

469 Ecclesall Road, Sheffield, S118PP  
SpencersEstateAgents.co.uk

**SpencersAgents**  
**SpencersAgents**  
**SpencersEstateAgents**

All enquiries and negotiations conducted via the Spencers office. We are obliged under the Estate Agent Act 1991 to qualify all offers and an independent mortgage consultant will speak to you to substantiate your details. The particulars are set out as a general outline only for guidance and do not constitute part of an offer or contract. Measurements are given in good faith and believed to be correct. Any prospective buyer should satisfy themselves as to the correctness of all statements and should not rely on them as representation of fact. No person in the employment of Spencers has any authority to make or give representation or warranty whatever in relation to this property.

Viewing: Via the Agents  
Spencers Agents Ltd, 469 Ecclesall Road, Sheffield S11 8pp | Registered in England No. 7565948