



Spencer.

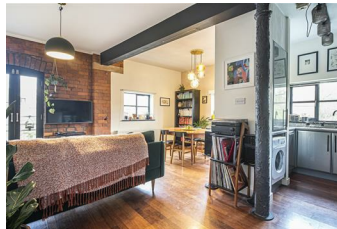
23, Borough Mews, City Centre, S6 3BT

Buy —

a stunning two double bedroom first floor apartment which forms part of this fabulous warehouse conversion within a gated development and an allocated parking space.

— from *Spencer.*

- Available with no chain
- Two double bedroom warehouse conversion
- Open plan living space
- First floor apartment with Juliet balcony
- Well presented throughout
- Gate development and secure allocated parking
- Original features remaining
- Council Tax Band-C
- EPC Rating-C
- What3words-/// shock.lived.luck



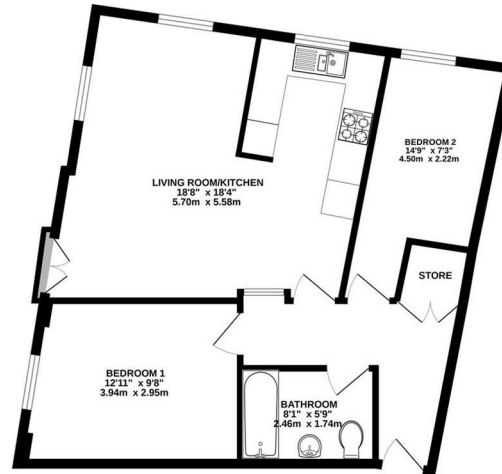
Offers Around

£165,000



Floorplan

FIRST FLOOR FLAT - MAX
ROOM HEIGHT = 2.70M



TOTAL FLOOR AREA: 667sq ft. (62.0 sq.m.) approx.
Whilst every effort has been made to ensure the accuracy of the foregoing dimensions, measurements, volumes, areas, and other data, Spencers Agents Ltd. does not warrant, represent or make any claim of accuracy or otherwise. This plan is for illustrative purposes only and should be used as such by any prospective purchaser. The purchaser, solicitor and mortgage lender have not been named and no guarantee is given for their operation or other matters mentioned hereon.



Spencer.

+44 (0)114 268 3682
info@spencersestateagents.co.uk

469 Ecclesall Road, Sheffield, S11 8PP
SpencersEstateAgents.co.uk

SpencersAgents
 SpencersAgents
 SpencersEstateAgents

All enquiries and negotiations conducted via the Spencers office. We are obliged under the Estate Agent Act 1991 to qualify all offers and an independent mortgage consultant will speak to you to substantiate your details. The particulars are set out as a general outline only for guidance and do not constitute part of an offer or contract. Measurements are given in good faith and believed to be correct. Any prospective buyer should satisfy themselves as to the correctness of all statements and should not rely on them as representation of fact. No person in the employment of Spencers has any authority to make or give representation or warranty whatever in relation to this property.

Viewing: Via the Agents
Spencers Agents Ltd, 469 Ecclesall Road, Sheffield S11 8pp | Registered in England No. 7565948