



Spencer.

57, Stumperlowe Crescent Road, Fulwood, S10 3PR

Buy ———
an incredible opportunity to purchase this plot of land
with planning permission for a quite incredible
detached house of over 8600 feet

——— from *Spencer.*

- Planning Permission 20/01750/FUL in perpetuity
- Over two thirds of an acre south facing plot with planning permission for an 8600 square ft house
- Premier S10 address
- PP for a four storey house with possible swimming pool, office, snug, cinema and gym
- Open plan living room with access onto large rear terrace
- Five large bedrooms all with en-suite bathrooms
- Top floor main bedroom suite with dressing room, en-suite, living room and balcony
- Subterranean garaging with car lift access
- Create your dream home in prime S10 location
- What3Words ///bells.plot.eagle



£1,550,000

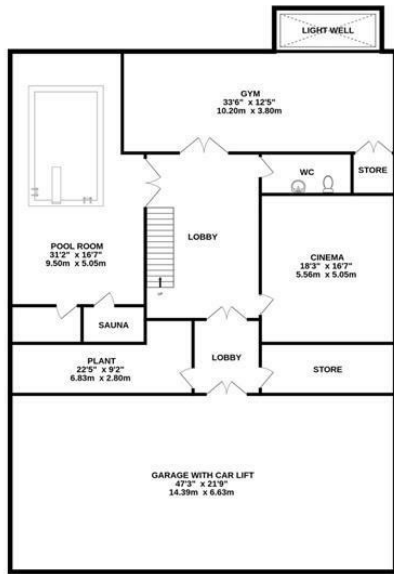






Floorplan

LOWER GROUND FLOOR
3083 sq.ft. (286.4 sq.m.) approx.



GROUND FLOOR
2013 sq.ft. (187.0 sq.m.) approx.



1ST FLOOR
1893 sq.ft. (175.9 sq.m.) approx.



2ND FLOOR
1625 sq.ft. (150.9 sq.m.) approx.



TOTAL FLOOR AREA : 8613 sq.ft. (800.2 sq.m.) approx.

Whilst every attempt has been made to ensure the accuracy of the floorplan contained here, measurements of doors, windows, rooms and any other items are approximate and no responsibility is taken for any error, omission or mis-statement. This plan is for illustrative purposes only and should be used as such by any prospective purchaser. The services, systems and appliances shown have not been tested and no guarantee as to their operability or efficiency can be given.

Made with Metropix ©2024

Spencers.

+44 (0)114 268 3682
info@spencersestateagents.co.uk

469 Ecclesall Road, Sheffield, S11 8PP
SpencersEstateAgents.co.uk

SpencersAgents
SpencersAgents
SpencersEstateAgents

All enquiries and negotiations conducted via the Spencers office. We are obliged under the Estate Agent Act 1991 to qualify all offers and an independent mortgage consultant will speak to you to substantiate your details. The particulars are set out as a general outline only for guidance and do not constitute part of an offer or contract. Measurements are given in good faith and believed to be correct. Any prospective buyer should satisfy themselves as to the correctness of all statements and should not rely on them as representation of fact. no person in the employment of Spencers has any authority to make or give representation or warranty whatever in relation to this property.

Viewing: Via the Agents
Spencers Agents Ltd, 469 Ecclesall Road, Sheffield S11 8pp | Registered in England No. 7565948