



Spencer.

Cemetery Road, Sharrow Vale, S11

Rent —

Amazing one bedroom flat with parking in S11,
Available NOW

— from *Spencer.*

- **BILLS INCLUDED** at an additional £100pcm
- **1BEDROOM AVAILABLE NOW**
- **FURNISHED**
- **Electric, Gas, Water & Broadband Included** in rent
- **Holding Deposit £190**
- **Security Deposit £950**
- **12 Month Tenancy**
- **Off Road Parking**
- **EPC Rating D**
- **Council Tax Band A**



£925

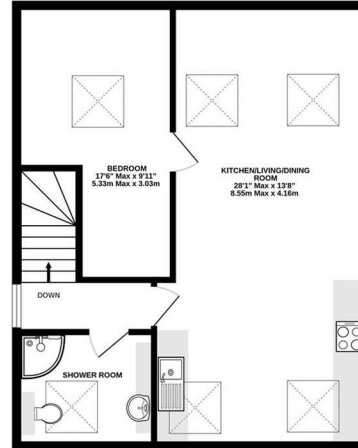
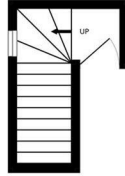
PCM



Floorplan

FIRST FLOOR
64 sq ft. (5.9 sq m) approx.

SECOND FLOOR
628 sq ft. (58.1 sq m) approx.



TOTAL FLOOR AREA: 692 sq ft. (64.3 sq m) approx.

While every attempt has been made to ensure the accuracy of the figures contained herein, measurements of plans, sections, levels and any other items are approximate and no responsibility is taken for any error, omission or mis-statement. This plan is for illustrative purposes only and should be used as such by any prospective purchaser. The services, agencies and appliances shown have not been tested and the guarantee as to their operability or efficiency can be given. Made with Metaphor 12/22

Spencer.

+44 (0)114 268 3682
info@spencersestateagents.co.uk
469 Ecclesall Road, Sheffield, S11 8PP
SpencersEstateAgents.co.uk

SpencersAgents
 SpencersAgents
 SpencersEstateAgents

All enquiries and negotiations conducted via the Spencers office. We are obliged under the Estate Agent Act 1991 to qualify all offers and an independent mortgage consultant will speak to you to substantiate your details. The particulars are set out as a general outline only for guidance and do not constitute part of an offer or contract. Measurements are given in good faith and believed to be correct. Any prospective buyer should satisfy themselves as to the correctness of all statements and should not rely on them as representation of fact. No person in the employment of Spencers has any authority to make or give representation or warranty whatever in relation to this property.

Viewing: Via the Agents
Spencers Agents Ltd, 469 Ecclesall Road, Sheffield S11 8pp | Registered in England No. 7565948