



Spencer.

152, Cromwell Street, Walkley, S6 3RP

Buy —

Superb three bedroom / two bathroom traditional stone fronted terraced property with conservatory and enclosed rear garden.

— from *Spencer.*

- 
- Available with no chain
  - Traditional stone fronted mid terrace
  - Three double bedrooms
  - Bathroom and a shower room
  - Conservatory
  - Enclosed rear garden
  - Excellent location close to amenities
  - Council Tax A
  - EPC- D
  - What three words///[park.linked.shine](http://park.linked.shine)



---

Offers Around

**£210,000**

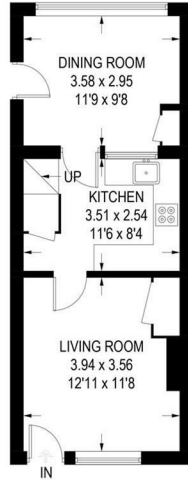




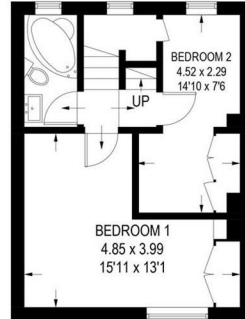
# Floorplan

## 152 CROMWELL STREET

APPROXIMATE GROSS INTERNAL AREA = 86.6 SQ M / 932 SQ FT



**GROUND FLOOR**  
35.4 SQ M / 381 SQ FT



**FIRST FLOOR**  
32.6 SQ M / 351 SQ FT



**SECOND FLOOR**  
18.6 SQ M / 200 SQ FT

Illustration for identification purposes only, measurements are approximate, not to scale.

**Spencer.**

+44 (0)114 268 3682  
info@spencersestateagents.co.uk

469 Ecclesall Road, Sheffield, S11 8PP  
SpencersEstateAgents.co.uk

**SpencersAgents**  
**SpencersAgents**  
**SpencersEstateAgents**

All enquiries and negotiations conducted via the Spencers office. We are obliged under the Estate Agent Act 1991 to qualify all offers and an independent mortgage consultant will speak to you to substantiate your details. The particulars are set out as a general outline only for guidance and do not constitute part of an offer or contract. Measurements are given in good faith and believed to be correct. Any prospective buyer should satisfy themselves as to the correctness of all statements and should not rely on them as representation of fact. No person in the employment of Spencers has any authority to make or give representation or warranty whatever in relation to this property.

Viewing: Via the Agents  
Spencers Agents Ltd, 469 Ecclesall Road, Sheffield S11 8PP | Registered in England No. 7565948