



Spencer.

**Apt 10, Cornwall Works, Green Lane, Kelham
Island. S3 8SI**

Buy —

This superbly presented, contemporary one double bedroom, first floor apartment with its ample natural light is available with no onward chain.

— from *Spencers.*

- Available with no chain
- One double bedroom, first floor apartment
- Open plan living kitchen with integrated appliances
- Beautifully presented throughout
- Contemporary bathroom
- Smart electric heating
- Popular development with lift access
- Council Tax Band-B
- EPC Rating -C
- [What3words///splash.forget.hero](https://www.what3words.com/splash.forget.hero)



Offers Around

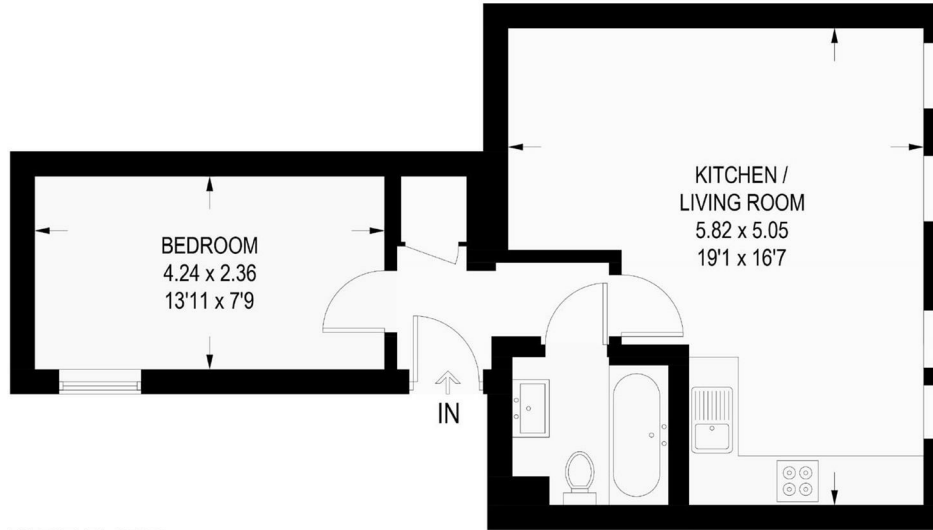
£125,000



Floorplan

10 CORNWALL WORKS

APPROXIMATE GROSS INTERNAL AREA = 42.8 SQ.M / 461 SQ.FT



FIRST FLOOR

Illustration for identification purposes only, measurements are approximate, not to scale.

Spencer.

+44 (0)114 268 3682

info@spencersestateagents.co.uk

469 Ecclesall Road, Sheffield, S11 8PP

SpencersEstateAgents.co.uk

 SpencersAgents

 SpencersAgents

 SpencersEstateAgents

All enquiries and negotiations conducted via the Spencers office. We are obliged under the Estate Agent Act 1991 to qualify all offers and an independent mortgage consultant will speak to you to substantiate your details. The particulars are set out as a general outline only for guidance and do not constitute part of an offer or contract. Measurements are given in good faith and believed to be correct. Any prospective buyer should satisfy themselves as to the correctness of all statements and should not rely on them as representation of fact. No person in the employment of Spencers has any authority to make or give representation or warranty whatever in relation to this property.

Viewing: Via the Agents

Spencers Agents Ltd, 469 Ecclesall Road, Sheffield S11 8pp | Registered in England No. 7565948