



Spencer.

Saxon House, 31, South Street, Mosborough, S20 5DE

Buy ———
the most wonderful historic Grade II Listed home with
lots of stories to tell and with huge possibilities in the
heart of Mosborough

——— from *Spencer.*

- A large detached Grade II listed 1
bedroomed home
- Huge potential for careful
improvements and layout upgra
- Wonderful historic property with
2500 of internal accommodation
- On the fringe of open countryside
excellent local walks and amenit
- Walled garden with unique outbu
suitable for home office or stora
- Perfect for development enthus
with the majority of the interior b
20th century changes
- Separate off-street parking spa
- Council Tax Band - F
- EPC Grade - E
- What3Words///debut.supposing



£399,000







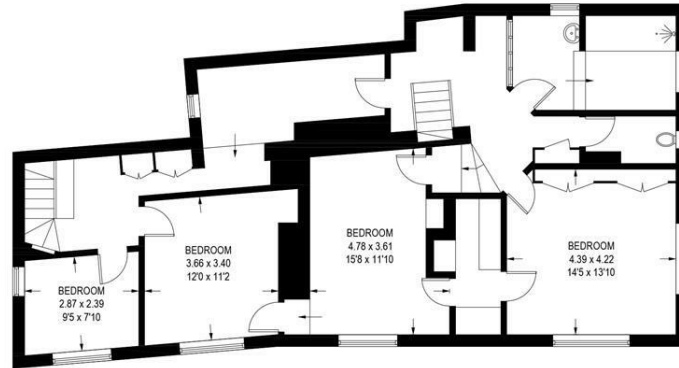
Floorplan

31 SOUTH STREET

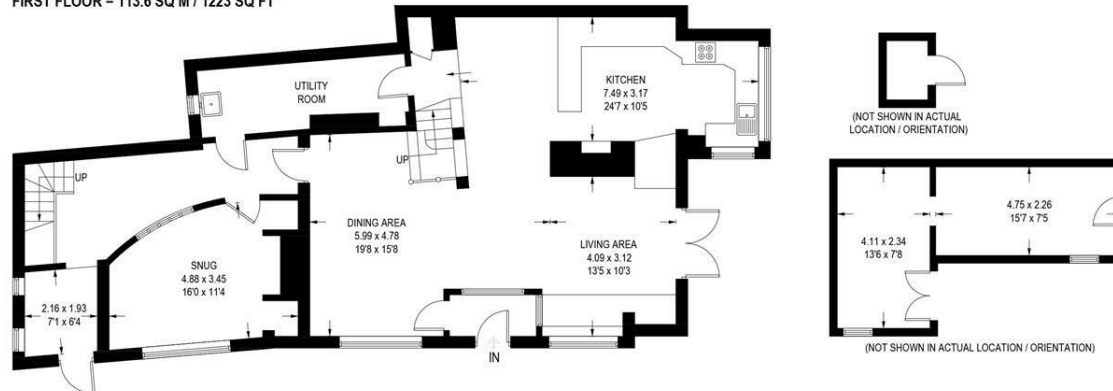
APPROXIMATE GROSS INTERNAL AREA = 233.3 SQ M / 2511 SQ FT

OUTBUILDINGS = 22.2 SQ M / 239 SQ FT

TOTAL = 255.5 SQ M / 2750 SQ FT



FIRST FLOOR = 113.6 SQ M / 1223 SQ FT



GROUND FLOOR = 119.7 SQ M / 1288 SQ FT

Illustration for identification purposes only, measurements are approximate, not to scale.

Spencers.

+44 (0)114 268 3682
info@spencersestateagents.co.uk

469 Ecclesall Road, Sheffield, S11 8PP
SpencersEstateAgents.co.uk

SpencersAgents
SpencersAgents
SpencersEstateAgents

All enquiries and negotiations conducted via the Spencers office. We are obliged under the Estate Agent Act 1991 to qualify all offers and an independent mortgage consultant will speak to you to substantiate your details. The particulars are set out as a general outline only for guidance and do not constitute part of an offer or contract. Measurements are given in good faith and believed to be correct. Any prospective buyer should satisfy themselves as to the correctness of all statements and should not rely on them as representation of fact. No person in the employment of Spencers has any authority to make or give representation or warranty whatever in relation to this property.

Viewing: Via the Agents
Spencers Agents Ltd, 469 Ecclesall Road, Sheffield S11 8pp | Registered in England No. 7565948