



Spencer.

36, Fitzwilliam Court, Ecclesall, S11 9GE

**Buy** —

this impressive two double bedroom fifth floor apartment which forms part of this desirable over 60's development in the popular area of Ecclesall S11

— from *Spencer.*

- Fifth floor apartment
- Two double bedrooms
- Lift to all floors
- Residents communal lounge
- On site warden/caretaker and emergency pull cord
- Residents off road parking
- Secure development with intercom
- Juliette balcony
- Close to amenities
- EPC Rating C

Open To Offers

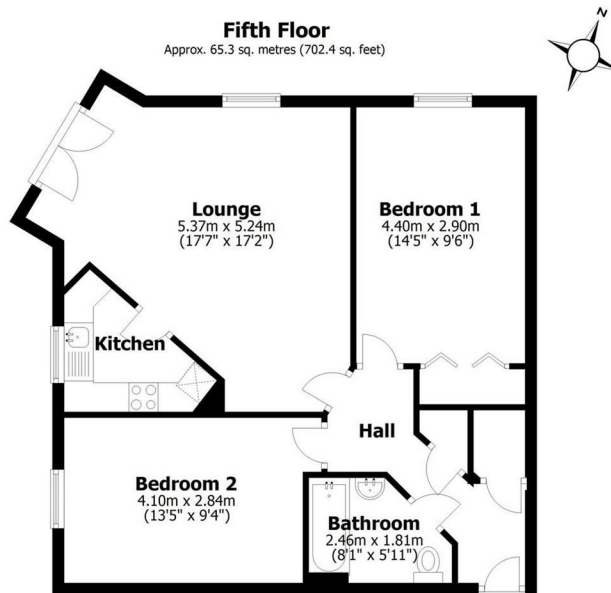
**£175,000**







# Floorplan



Total area: approx. 65.3 sq. metres (702.4 sq. feet)

All measurements are approximate  
Yorkshire EPC & Floor Plans Ltd  
Plan produced using PlanUp.

**Spencer.**

+44 (0)114 268 3682  
info@spencersestateagents.co.uk

469 Ecclesall Road, Sheffield, S11 8PP  
SpencersEstateAgents.co.uk

**SpencersAgents**  
**SpencersAgents**  
**SpencersEstateAgents**

All enquiries and negotiations conducted via the Spencers office. We are obliged under the Estate Agent Act 1991 to qualify all offers and an independent mortgage consultant will speak to you to substantiate your details. The particulars are set out as a general outline only for guidance and do not constitute part of an offer or contract. Measurements are given in good faith and believed to be correct. Any prospective buyer should satisfy themselves as to the correctness of all statements and should not rely on them as representation of fact. No person in the employment of Spencers has any authority to make or give representation or warranty whatever in relation to this property.

Viewing: Via the Agents  
Spencers Agents Ltd, 469 Ecclesall Road, Sheffield S11 8pp | Registered in England No. 7565948