



Spencer.

105, Western Road, Crookes, S10 1LB

Buy —

this superbly located two double bedroom, terraced home with the benefit of separate office room, utility and enclosed rear garden in the heart of popular Crookes.

— from *Spencer.*

- Available with NO ONWARD CHAIN
- Traditional mid terrace house
- Two double bedrooms and office/study/ occasional room
- Kitchen and separate utility room
- Open plan lounge/diner
- Rear enclosed low maintenance garden
- Excellent location for hospitals, universities and amenities
- Council Tax Band -A
- EPC Rating-D
- What3words///wiser.glove.lobby

Offers Around

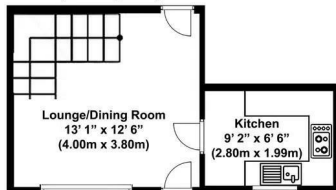
£200,000



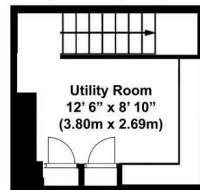


Floorplan

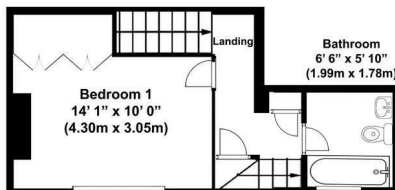
Ground Floor
225.8 sq.ft.
(21 sq. m.)



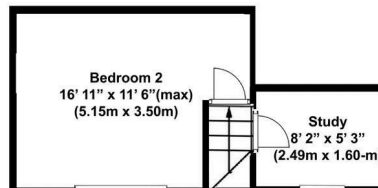
Basement
149.7 sq.ft.
(13.9 sq. m.)



First Floor
283.7 sq. ft.
(26.4 sq. m.)



Second Floor
240.2 sq. ft.
(22.3 sq. m.)



Total area: approx 899.4 sq. ft. (83.6 sq. m)

THIS FLOORPLAN IS PROVIDED WITHOUT WARRANTY OF ANY KIND. SENSOPIA DISCLAIMS ANY WARRANTY INCLUDING, WITHOUT LIMITATION, SATISFACTORY QUALITY OR ACCURACY OF DIMENSIONS

All measurements are approximate

Spencer.

+44 (0)114 268 3682
info@spencersestateagents.co.uk

469 Ecclesall Road, Sheffield, S11 8PP
SpencersEstateAgents.co.uk

SpencersAgents
 SpencersAgents
 SpencersEstateAgents

All enquiries and negotiations conducted via the Spencers office. We are obliged under the Estate Agent Act 1991 to qualify all offers and an independent mortgage consultant will speak to you to substantiate your details. The particulars are set out as a general outline only for guidance and do not constitute part of an offer or contract. Measurements are given in good faith and believed to be correct. Any prospective buyer should satisfy themselves as to the correctness of all statements and should not rely on them as representation of fact. No person in the employment of Spencers has any authority to make or give representation or warranty whatever in relation to this property.

Viewing: Via the Agents
Spencers Agents Ltd, 469 Ecclesall Road, Sheffield S11 8PP | Registered in England No. 7565948