



Spencer.

113, Cobden View Road, Crookes, S10 1HR

Buy —

this well-proportioned, four bedroom, two bath/shower room, semi-detached family home in the popular and well-serviced area of Crookes.

— from *Spencer*.

- NO CHAIN- Well-presented
- Four bedroom semi-detached home
- Bay-windowed lounge
- Large rear family/dining room
- Separate bathroom and shower room
- Garage store
- Low maintenance rear garden
- Council Tax Band-B
- EPC Rating - C
- [What3words///bottle.life.list](https://www.what3words.com/bottle.life.list)

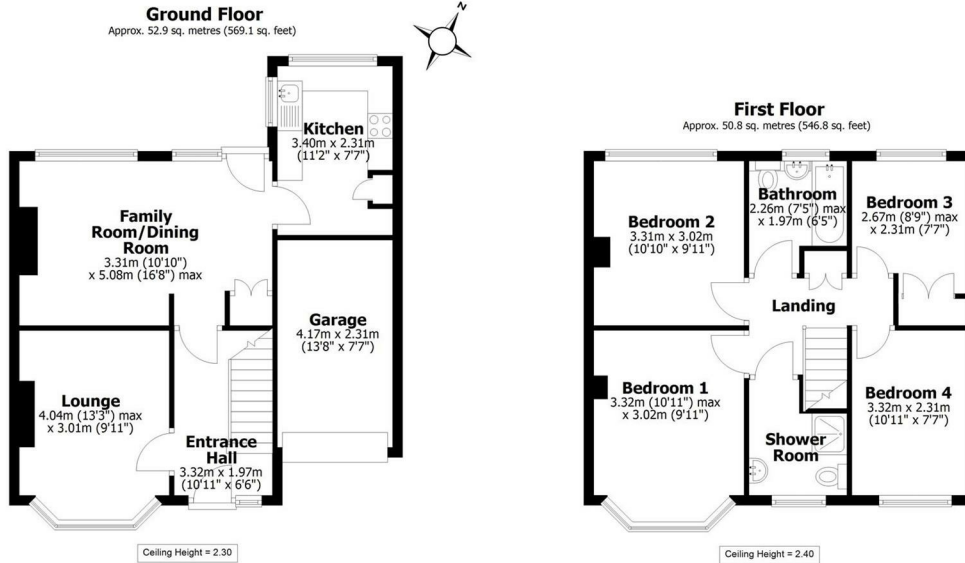


Price Guide

£310,000



Floorplan



Total area: approx. 103.7 sq. metres (1115.9 sq. feet)

All measurements are approximate
Yorkshire EPC & Floor Plans Ltd
Plan produced using Planip.

113 Cobden View Road

Spencer.

+44 (0)114 268 3682
info@spencersestateagents.co.uk

469 Ecclesall Road, Sheffield, S118PP
SpencersEstateAgents.co.uk

SpencersAgents
SpencersAgents
SpencersEstateAgents

All enquiries and negotiations conducted via the Spencers office. We are obliged under the Estate Agent Act 1991 to qualify all offers and an independent mortgage consultant will speak to you to substantiate your details. The particulars are set out as a general outline only for guidance and do not constitute part of an offer or contract. Measurements are given in good faith and believed to be correct. Any prospective buyer should satisfy themselves as to the correctness of all statements and should not rely on them as representation of fact. No person in the employment of Spencers has any authority to make or give representation or warranty whatever in relation to this property.

Viewing: Via the Agents
Spencers Agents Ltd, 469 Ecclesall Road, Sheffield S11 8pp | Registered in England No. 7565948