



Spencer.

25, Balmoral Crescent, Lodge Moor, S10 4NE

Buy —

This well proportion detached family home in an excellent location with four double bedrooms and three reception rooms.

— from *Spencer.*

- Superb detached family home
- Four double bedrooms with master ensuite
- Family bathroom and downstairs WC
- Open plan kitchen diner with separate utility and store
- Three reception rooms
- Enclosed and private rear garden
- Ample off street parking
- Council Tax Band-F
- EPC Rating-C
- what3words:///mint.super.tribune

Offers Around

£765,000



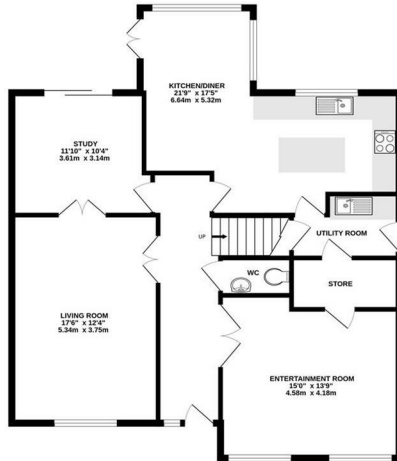




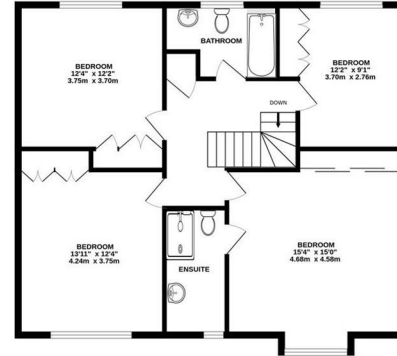


Floorplan

GROUND FLOOR
CEILING HEIGHT 2.31 M
1019 sq.ft. (94.6 sq.m.) approx.



1ST FLOOR
CEILING HEIGHT 2.43 M
915 sq.ft. (85.0 sq.m.) approx.



TOTAL FLOOR AREA : 1933 sq.ft. (179.6 sq.m.) approx.

Whilst every attempt has been made to ensure the accuracy of the floorplan contained herein, measurements of doors, windows, rooms and any other items are approximate and no responsibility is taken for any error, omission or mis-statement. This plan is for illustrative purposes only and should be used as such by any prospective purchaser. The services, systems and appliances shown have not been tested and no guarantee as to their operability or efficiency can be given.

Made with Metropix ©2025



Spencer.

+44 (0)114 268 3682
info@spencersestateagents.co.uk

469 Ecclesall Road, Sheffield, S118PP
SpencersEstateAgents.co.uk

SpencersAgents
 SpencersAgents
 SpencersEstateAgents

All enquiries and negotiations conducted via the Spencers office. We are obliged under the Estate Agent Act 1991 to qualify all offers and an independent mortgage consultant will speak to you to substantiate your details. The particulars are set out as a general outline only for guidance and do not constitute part of an offer or contract. Measurements are given in good faith and believed to be correct. Any prospective buyer should satisfy themselves as to the correctness of all statements and should not rely on them as representation of fact. No person in the employment of Spencers has any authority to make or give representation or warranty whatever in relation to this property.

Viewing: Via the Agents
Spencers Agents Ltd, 469 Ecclesall Road, Sheffield S11 8PP | Registered in England No. 7565948