



Spencer.

536, Ecclesall Road, Botanical Gardens, S11 8PY

Buy

a superb opportunity to acquire this traditional stone built end terrace property with six bedrooms and scope to create a fabulous family home all without a chain.

— from *Spencer.*

- Available with no chain
- Six bedroom home
- Traditional stone built end terrace
- Perfect family home
- Two reception rooms and separate kitchen
- Enclosed private rear garden
- Two cellar storage rooms
- Council tax band- C
- EPC rating- D
- [What3words///loving.plot.class](https://www.what3words.com/loving.plot.class)

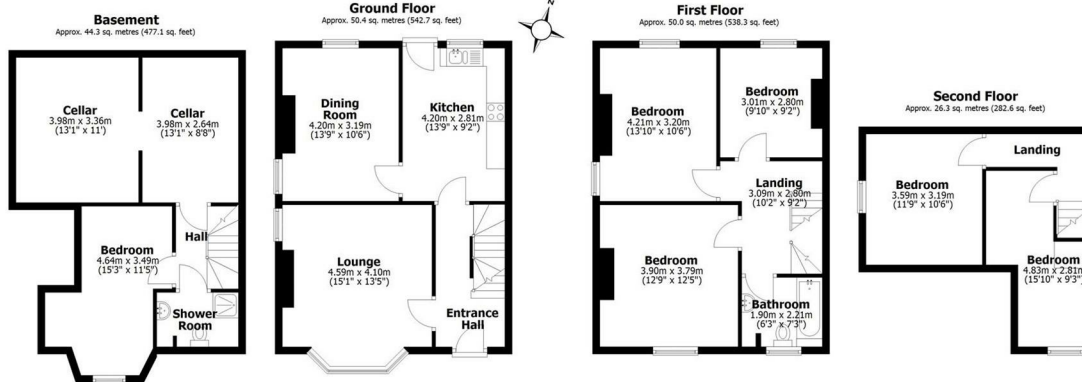


Offers Around

£340,000



Floorplan



Total area: approx. 171.0 sq. metres (1840.6 sq. feet)

All measurements are approximate
notwithstanding EPC & Floor Plans. List
Plan produced using Planlup.

536 Ecclesall Road

Spencer.

+44 (0)114 268 3682

info@spencersestateagents.co.uk

469 Ecclesall Road, Sheffield, S11 8PP

SpencersEstateAgents.co.uk

SpencersAgents

SpencersAgents

SpencersEstateAgents

All enquiries and negotiations conducted via the Spencers office. We are obliged under the Estate Agent Act 1991 to qualify all offers and an independent mortgage consultant will speak to you to substantiate your details. The particulars are set out as a general outline only for guidance and do not constitute part of an offer or contract. Measurements are given in good faith and believed to be correct. Any prospective buyer should satisfy themselves as to the correctness of all statements and should not rely on them as representation of fact. No person in the employment of Spencers has any authority to make or give representation or warranty whatever in relation to this property.

Viewing: Via the Agents

Spencers Agents Ltd, 469 Ecclesall Road, Sheffield S11 8pp | Registered in England No. 7565948